



# technical data

Indoor units  
CTXG-JV1BW\_JV1BS

air conditioning systems

**R-410A**



# technical data

Indoor units  
CTXG-JV1BW\_JV1BS

air conditioning systems

**R-410A**

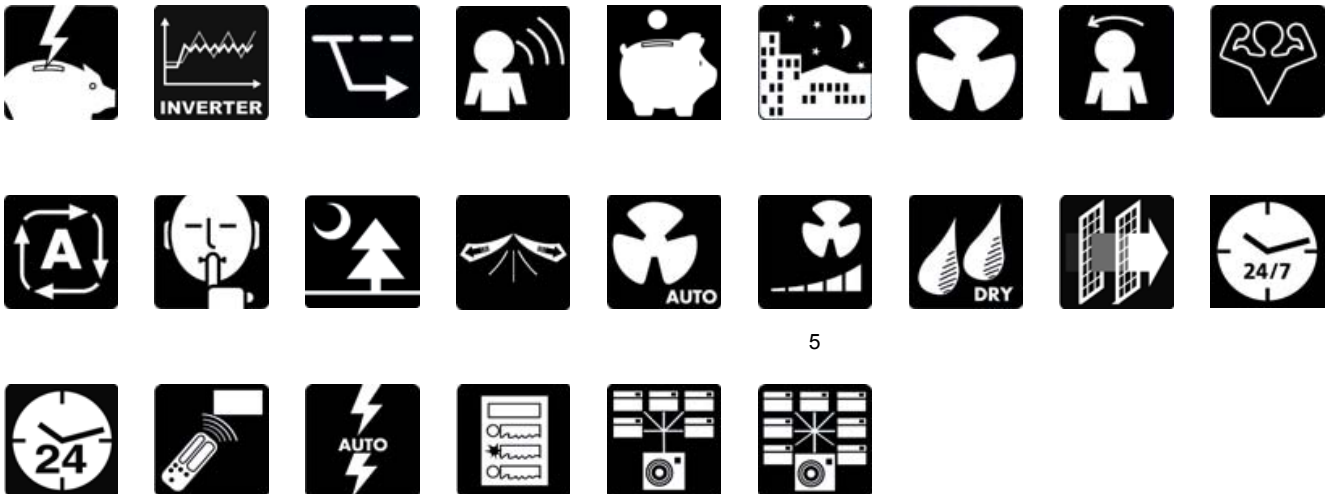
# TABLE OF CONTENTS

## CTXG-JV1BW\_JV1BS

1	Features .....	2
2	Specifications .....	3
	Technical Specifications .....	3
	Electrical Specifications .....	4
3	Dimensional drawing & centre of gravity .....	5
	Dimensional drawing .....	5
	Centre of gravity .....	6
4	Piping diagram.....	7
5	Wiring diagram.....	8
	Wiring diagram .....	8
6	Sound data.....	9
	Sound Pressure spectrum .....	9

# 1 Features

- Remarkable blend iconic design and engineering excellence with an elegant finish in brushed aluminium or matt crystal white
- Weekly timer can be set to start heating or cooling anytime on a daily or weekly basis
- Comfort mode guarantees draught free operation by preventing that warm or cold air is directly blown on to the body
- Indoor unit silent operation: "silent" buttons on the remote control lower the operating sound of the indoor unit by 3dBA each
- Movement sensor saves power consumption in unoccupied rooms: when the room is empty, the unit switches to economy mode after 20 minutes and restarts when a person enters the room
- Night quiet mode automatically reduces the operation sound of the outdoor unit by 3 dBA during night time (multi outdoors in cooling mode only) Night set mode saves energy by preventing overcooling or overheating during night time. Powerful mode can be selected for rapid heating or cooling; after the powerful mode is turned off, the unit returns to the preset mode
- Titanium apatite photocatalytic air purification filter removes airborne microscopic particles, powerfully decomposes odours and helps to prevent the propagation of bacteria, viruses, microbes to ensure a steady supply of clean air



5

## 2 Specifications

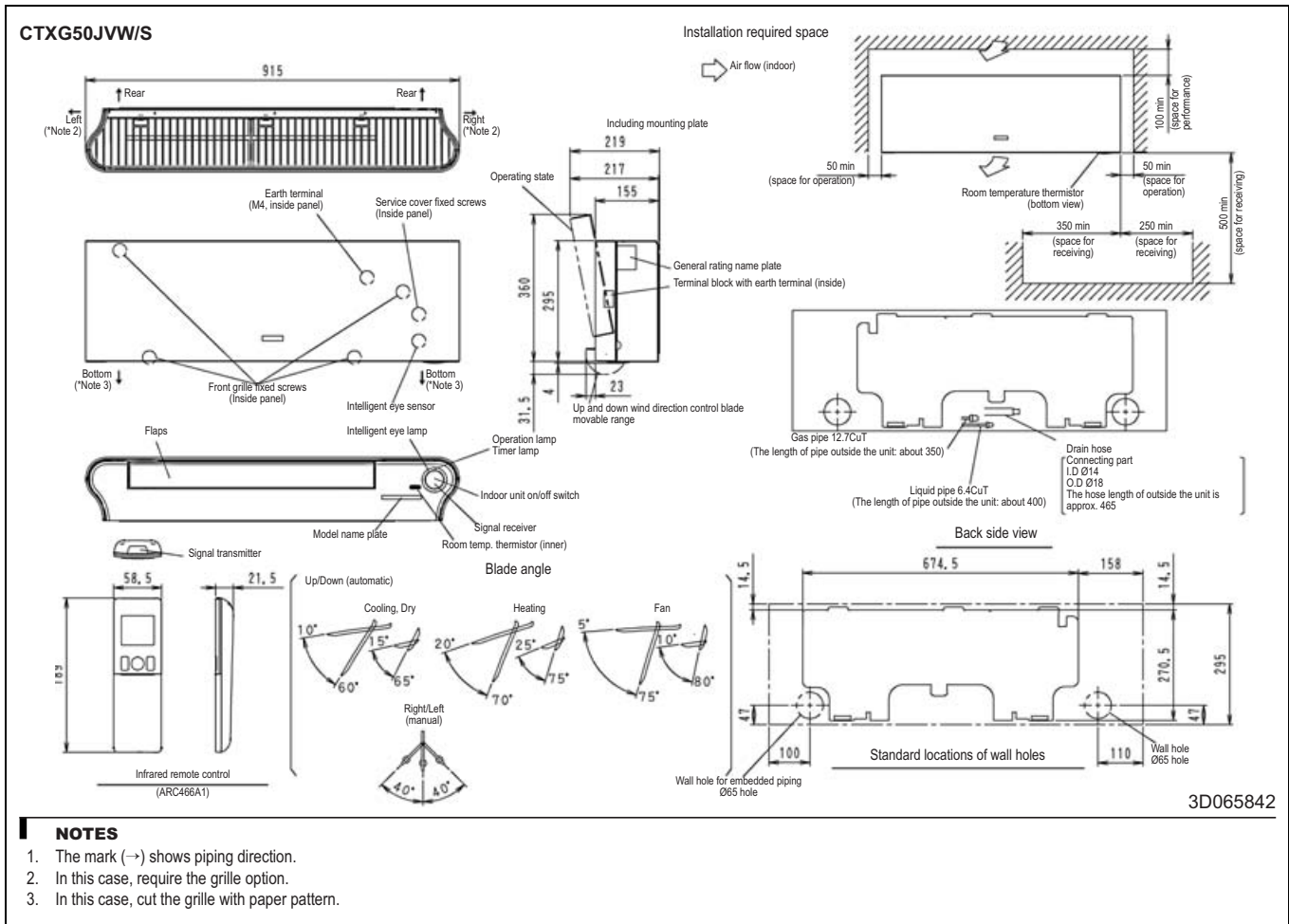
2-1 Technical Specifications				CTXG50JS	CTXG50JW		
Air direction control				Right, Left, Horizontal, Downward			
Air filter				Removable/washable/Mildew proof			
Casing	Colour			Silver	White		
Decoration panel	Colour	White					
Dimensions	Packed unit	Height	mm	285			
		Width	mm	377			
		Depth	mm	1,003			
	Unit	Height	mm	295			
		Width	mm	915			
		Depth	mm	155			
Weight	Packed unit	kg	16.0	15.0			
	Unit	kg	11.0				
Fan	Type	Cross flow fan					
	Air Flow Rate	Cooling (High)	m <sup>3</sup> /min	10.5			
		Cooling (Low)	m <sup>3</sup> /min	6.9			
		Cooling (Nom.)	m <sup>3</sup> /min	8.7			
		Cooling (Silent operation.)	m <sup>3</sup> /min	5.90			
		Cooling (High)	cfm	371			
		Cooling (Low)	cfm	244			
		Cooling (Nom.)	cfm	307			
		Cooling (Silent operation.)	cfm	208			
		Heating (High)	m <sup>3</sup> /min	11.4			
		Heating (Low)	m <sup>3</sup> /min	8.1			
		Heating (Nom.)	m <sup>3</sup> /min	9.80			
		Heating (Silent operation.)	m <sup>3</sup> /min	7.1			
		Heating (High)	cfm	402			
		Heating (Low)	cfm	286			
		Heating (Nom.)	cfm	346			
		Heating (Silent operation.)	cfm	251			
		Motor	Model	KF-220-25L-1			
		Motor	Speed	Cooling (Low)	rpm	1,230	
	Cooling (High)			rpm	1,710		
Heating (Low)	rpm			1,390			
Heating (High)	rpm			1,830			
Heating (Medium)	rpm			1,610			
Heating (Silent operation.)	rpm			1,260			
Steps	5 + silent, + auto						
Cooling	Sound Power	High	dBA	60			
		Low	dBA	35			
	Sound Pressure	High	dBA	44			
		Nominal	dBA	41			
		Silent Operation	dBA	32			
Heating	Sound Power	High	dBA	60			
		Low	dBA	35			
	Sound Pressure	High	dBA	44			
		Nominal	dBA	41			
		Silent Operation	dBA	32			
Heat exchanger	Fin	Type	Multi slit fin				
	Fin pitch	mm	1.20				
	Length	mm	610				
	Rows	Quantity	2				
	Stages	Quantity	18				
Evaporator piping connections	Gas	OD	mm	9.5			
	Liquid	OD	mm	6.35			
Piping connections	Drain	18					
	Gas	OD	mm	12.70			
	Liquid	OD	mm	6.35			
Refrigerant	Type	R-410A					

## 2 Specifications

2-1 Technical Specifications				CTXG50JS	CTXG50JW
Sound power level	Cooling	High	dB(A)	60	
		Nom.	dB(A)	60	
Temperature control				Microcomputer control	
2-2 Electrical Specifications				CTXG50JS	CTXG50JW
Power Supply	Name			V1	
	Phase			1	
	Frequency		Hz	50	
	Voltage		V	220-230-240	
Nominal running current (RLA) - 50Hz	Compressor 1	Cooling	A	0.16	
		Heating	A	0.19	
	Compressor 2	Cooling	A	0.15	
		Heating	A	0.18	
	Compressor 3	Cooling	A	0.14	
		Heating	A	0.17	
Nominal running current (RLA) - 50Hz		Cooling	A	0.16	
Wiring connections - 50Hz		For power supply	Remark	3 for power supply, 4 for interunit wiring (Earth wire included)	

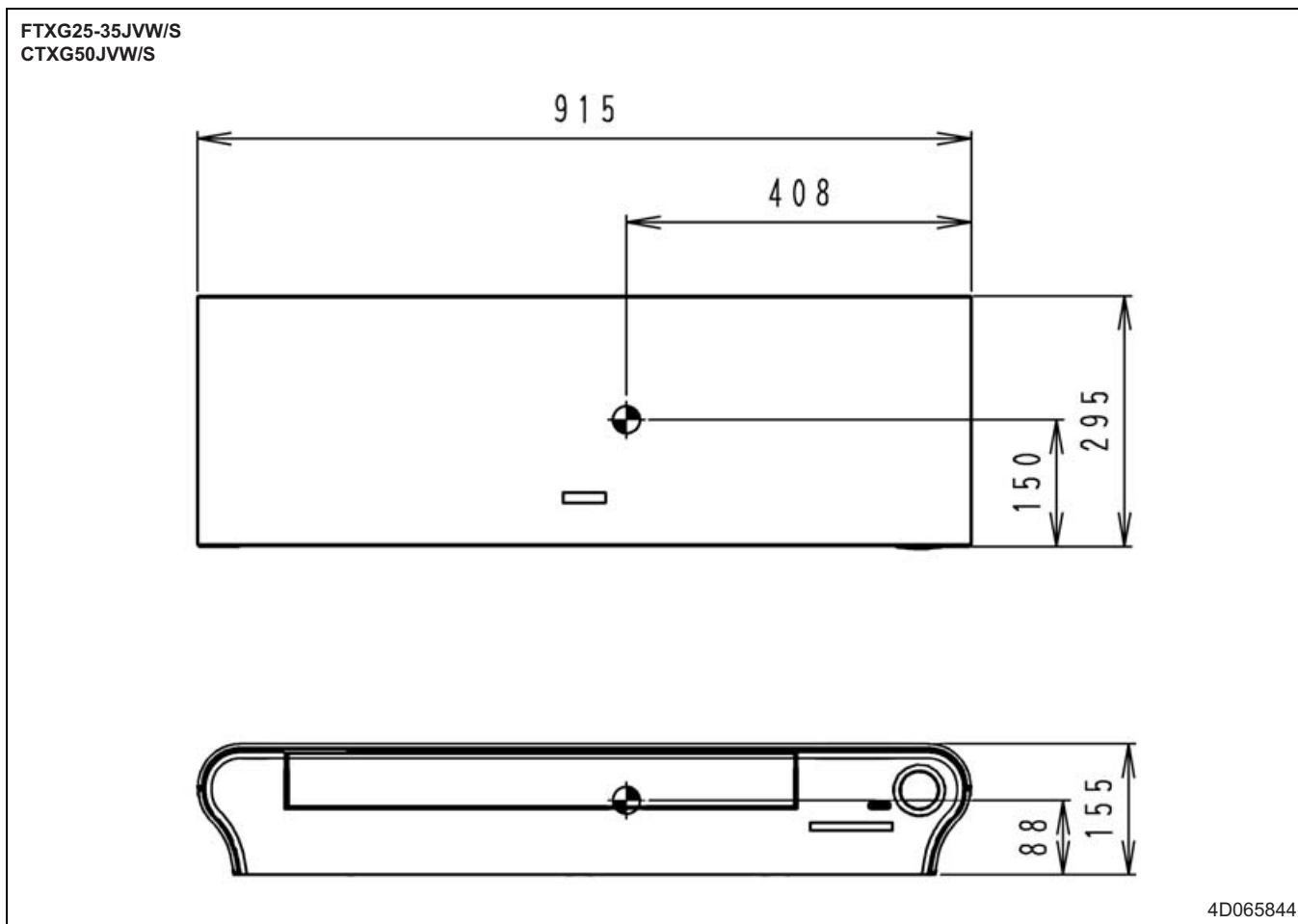
### 3 Dimensional drawing & centre of gravity

#### 3 - 1 Dimensional drawing



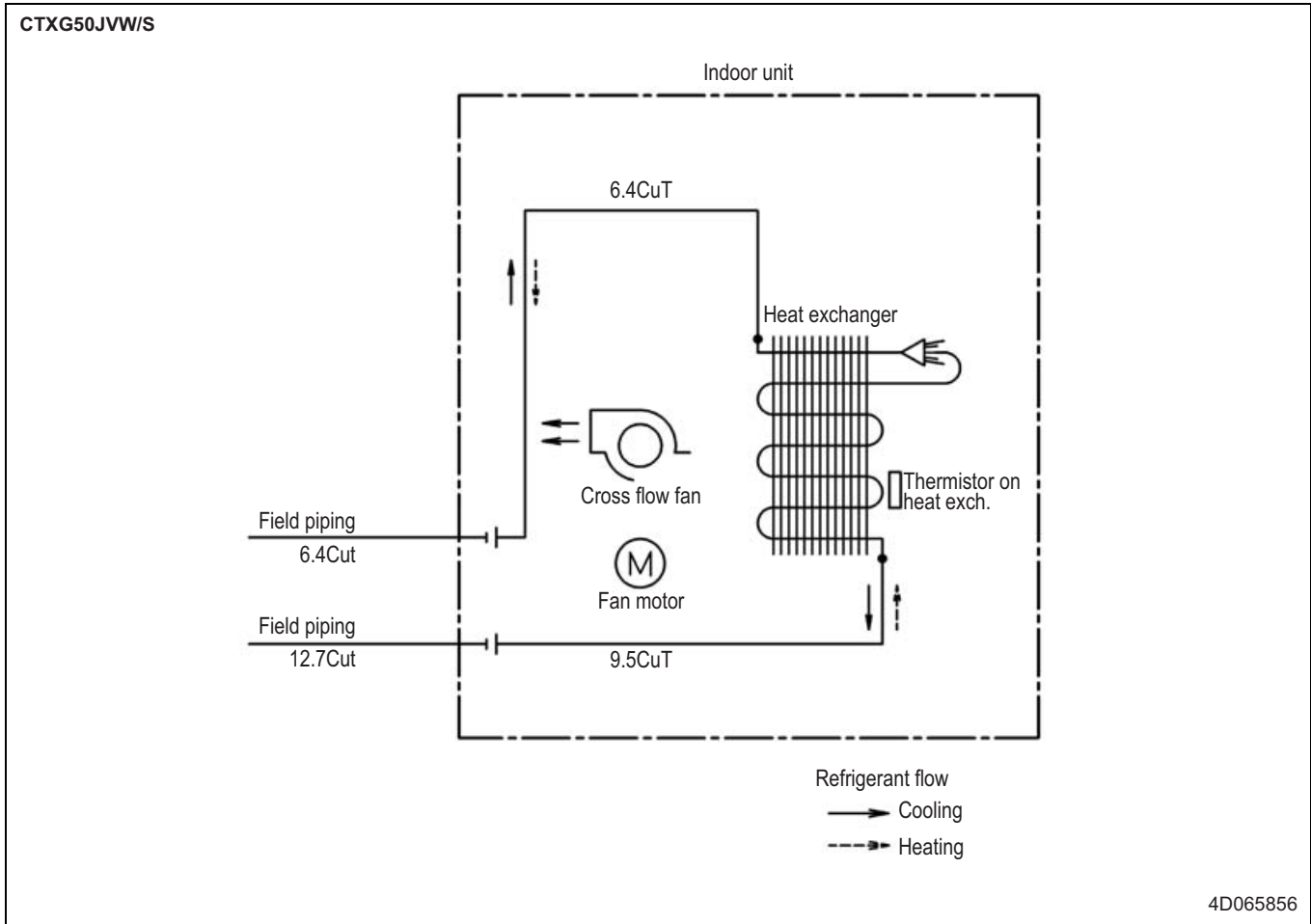
### 3 Dimensional drawing & centre of gravity

#### 3 - 2 Centre of gravity





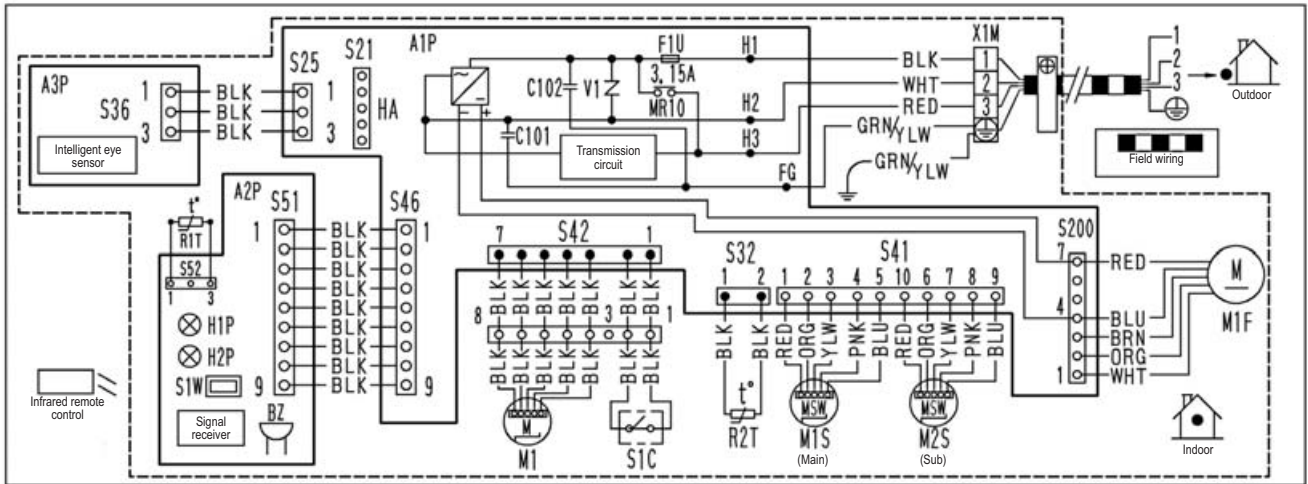
# 4 Piping diagram



# 5 Wiring diagram

## 5 - 1 Wiring diagram

FTXG25-35JVW/S  
CTXG50JVW/S



**Caution**

Note that operation will restart automatically if the main power supply is turned off and then back on again.

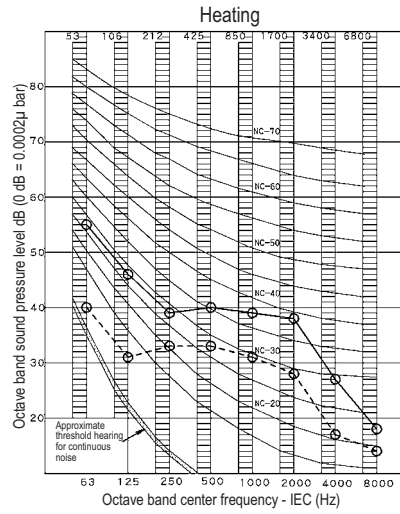
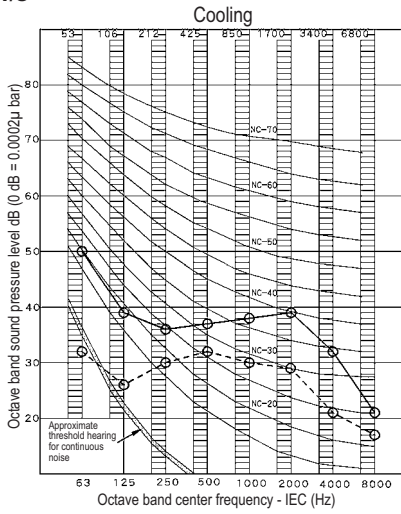
FG	Frame ground	R1T, R2T	Thermistor
F1U	Fuse	S25-S200	Connector
H1P, H2P	Pilot lamp	S1W	Operation switch
M1F	Fan motor	S1C	Limit switch
M1S, M2S	Swing motor	X1M	Terminal strip
M1	Stepping motor	BZ	Buzzer
A1P~A3P	Printed circuit board	⊕	Protective earth

3D065507-1A

# 6 Sound data

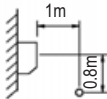
## 6 - 1 Sound Pressure spectrum

CTXG50JVW/S



**NOTES**

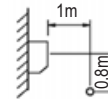
- 1 Over All (dB): (B,G,N is already rectified)
- 2 Measuring place: measure in anechoic room.
- 3 Operation noise differs with operation and ambient conditions.
- 4 Location of microphone.  
JISC9612  
The operation noise measuring method is in accordance with JISC9612



Scale	50Hz 220-240V	
	H	L
A	44	35

**NOTES**

- 1 Over All (dB): (B,G,N is already rectified)
- 2 Measuring place: measure in anechoic room.
- 3 Operation noise differs with operation and ambient conditions.
- 4 Location of microphone.  
JISC9612  
The operation noise measuring method is in accordance with JISC9612



Scale	50Hz 220-240V	
	H	L
A	44	35

3D066710

In all of us,  
a green heart



Daikin's unique position as a manufacturer of air conditioning equipment, compressors and refrigerants has led to its close involvement in environmental issues. For several years Daikin has had the intention to become a leader in the provision of products that have limited impact on the environment. This challenge demands the eco design and development of a wide range of products and an energy management system, resulting in energy conservation and a reduction of waste.



Daikin Europe N.V. is approved by LRQA for its Quality Management System in accordance with the ISO9001 standard. ISO9001 pertains to quality assurance regarding design, development, manufacturing as well as to services related to the product.



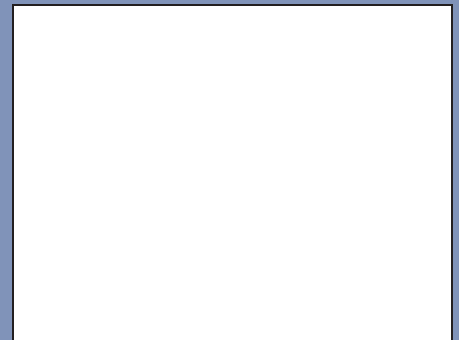
ISO14001 assures an effective environmental management system in order to help protect human health and the environment from the potential impact of our activities, products and services and to assist in maintaining and improving the quality of the environment.



Daikin units comply with the European regulations that guarantee the safety of the product.

VRV® products are not within the scope of the Eurovent certification programme.

The present publication is drawn up by way of information only and does not constitute an offer binding upon Daikin Europe N.V.. Daikin Europe N.V. has compiled the content of this publication to the best of its knowledge. No express or implied warranty is given for the completeness, accuracy, reliability or fitness for particular purpose of its content and the products and services presented therein. Specifications are subject to change without prior notice. Daikin Europe N.V. explicitly rejects any liability for any direct or indirect damage, in the broadest sense, arising from or related to the use and/or interpretation of this publication. All content is copyrighted by Daikin Europe N.V..



## DAIKIN EUROPE N.V.

Naamloze Vennoetschap  
Zandvoordestraat 300  
B-8400 Oostende, Belgium  
www.daikin.eu  
BE 0412 120 336  
RPR Oostende