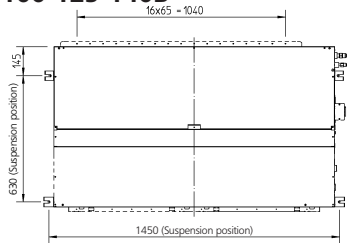
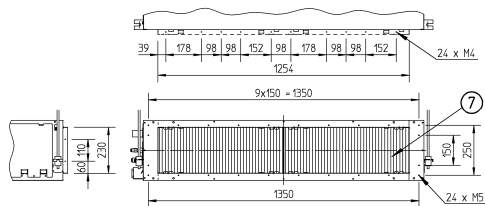


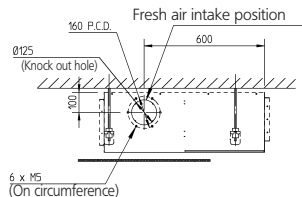
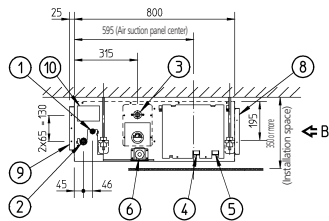
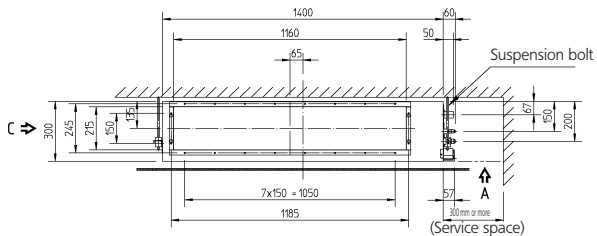
FBQ100-125-140B



view A



view B



view C

Notes:

1. Refer to 'outlook drawing for installing optional accessories' when installing optional accessories.
2. The required ceiling depth varies according to configuration of the specific system.
3. For maintenance of the air filter, it is necessary to provide a service access panel according to the installation method. (Refer to the 'filter installation method' drawing)

- 1 Liquid pipe connection ϕ A Flare connection
- 2 Gas pipe connection ϕ B Flare connection
- 3 Drain pipe connection VP25 (I.D. ϕ 32, I.D. ϕ 25)
- 4 Remote control wiring connection
- 5 Power supply connection
- 6 Drain hole VP25 (I.D. ϕ 32, I.D. ϕ 25)
- 7 Air filter
- 8 Air suction side
- 9 Air discharge side
- 10 Name plate

Model	A	B
FHYB(P)100	9.52	19.10
FHYB(P)125	9.52	19.10
FXYS80	9.52	15.90
FXYS100	9.52	19.10
FXYS125	9.52	19.10
FBQ100	9.52	15.90
FBQ125,140	9.52	15.90