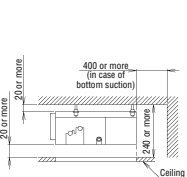
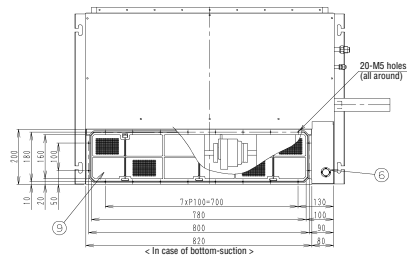
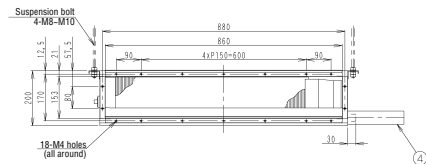
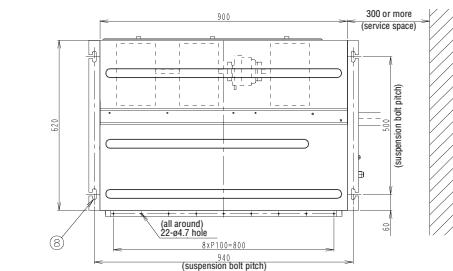
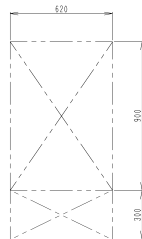


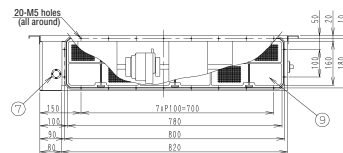
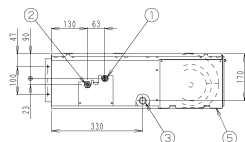
# FDK/XS25,35CVMB



↑ A  
< Service space >



Allow view A  
Inspection door  
(ceiling opening)



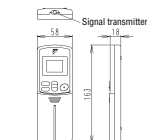
## LEGEND

- 1 Liquid pipe connection:  $\phi$  6.4 flare (connection)
- 2 Gas pipe connection: see note 4.
- 3 Socket for drain: VP20 (O.D.  $\phi$ 26, I.D.  $\phi$ 20)
- 4 Drain hose (accessory): I.D.  $\phi$ 25 (outlet)
- 5 Control box
- 6 Infrared receiver unit connection
- 7 Power supply connection
- 8 Suspension bracket
- 9 Air filter (accessory)

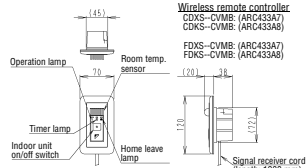
## NOTES

- 1 In case of back-suction, mount chamber cover to bottom side of the unit. In case of bottom-suction, mount chamber cover to back side of the unit.
- 2 Location of unit's name plate: control box cover.
- 3 Mount the air filter at the suction side. (Select its colorimethod (gravity method) 50 % or more) It can not be equipped with air filter (accessory) when connecting duct to suction side.
- 4 Pipe specification

FDX(K)S25	
CDX(K)S25	ø 9.5 (flare connection)
FDX(K)S35	
CDX(K)S35	ø 12.7 (flare connection)
CDX(K)S50	



Wireless remote controller  
CDXS-CVMB: (ARC433A7)  
CDKS-CVMB: (ARC433A8)  
FDXS-CVMB: (ARC433A7)  
FDKS-CVMB: (ARC433A8)



Infrared receiver unit