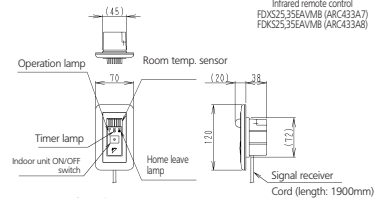
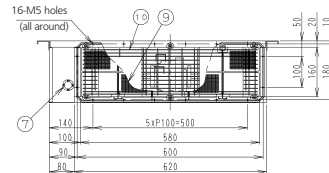


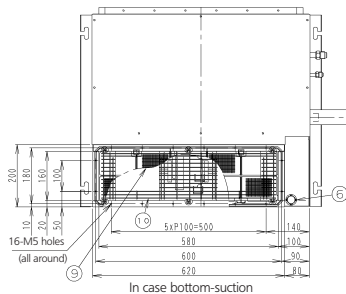
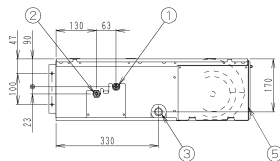
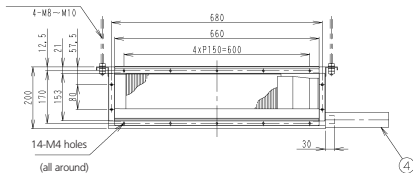
Infrared remote control  
FDX2535EA/MB (ARC433A7)  
FDK2535EA/MB (ARC433A8)



Infrared receiver unit



In case of back suction



In case bottom-suction

### Notes:

- In case of back-suction, mount chamber cover to bottom side of the unit.  
In case of bottom-suction, mount chamber cover to back side of the unit.
- Location of unit's name plate: control box cover. (unit: mm).
- Mount the air filter at the suction side. (select its colorimethod (gravity method) 50% or more).  
It can not be equipped with air filter (accessory) when connecting duct to suction side.
- Pipe specification

- Liquid pipe connection  $\phi$  6.4 (Flare connection)
- Gas pipe connection  $\phi$  9.5 (Flare connection)
- Socket for drain VP20 (O.D.  $\phi$  26 / I.D.  $\phi$  20)
- Drain hose (accessory) I.D.  $\phi$  25 (Outlet)
- Control box
- Infrared receiver unit connection
- Power supply connection
- Suspension bracket
- Air filter (accessory)
- Protection net