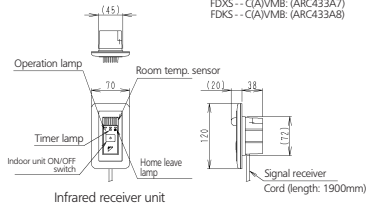
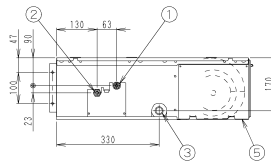
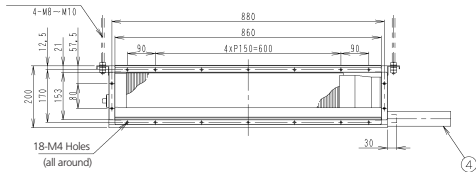


Infrared remote control
FDXS - C(A)/MB; (ARC433A7)
FDKS - C(A)/MB; (ARC433A8)

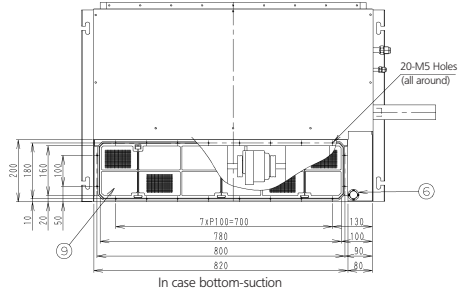


Infrared receiver unit

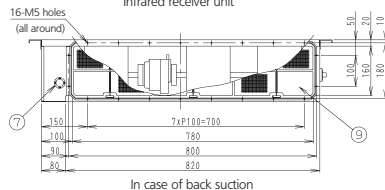


Notes:

- In case of back-suction, mount chamber cover to bottom side of the unit.
In case of bottom-suction, mount chamber cover to back side of the unit.
- Location of unit's name plate: control box cover. (unit: mm).
- Mount the air filter at the suction side. (select its colorimethod (gravity method) 50% or more).
It can not be equipped with air filter (accessory) when connecting duct to suction side.
- Pipe specification



In case bottom-suction



In case of back suction

FDX(K)S50

φ 12.7 (Flare connection)

- Liquid pipe connection φ 6.4 (Flare connection)
- Gas pipe connection NOTE 4.
- Socket for drain VP20 (O.D. φ 26 / I.D. φ 20)
- Drain hose (accessory) I.D. φ 25 (Outlet)
- Control box
- Infrared receiver unit connection
- Power supply connection
- Suspension bracket
- Air filter (accessory)