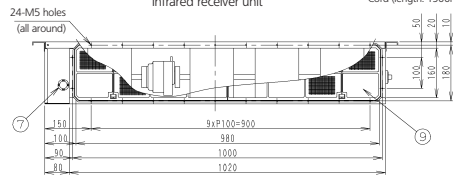
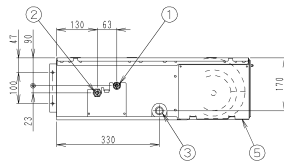
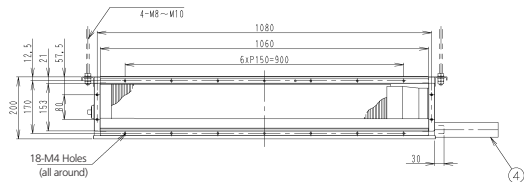
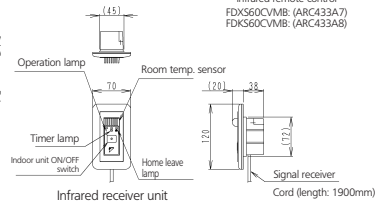
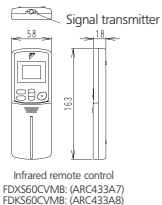
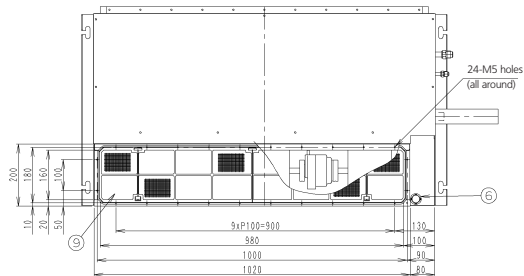


Allow view A  
Inspection door (ceiling opening)



In case of back suction



In case bottom-suction

### Notes:

- In case of back-suction, mount chamber cover to bottom side of the unit.  
In case of bottom-suction, mount chamber cover to back side of the unit.
- Location of unit's name plate: control box cover. (unit: mm).
- Mount the air filter at the suction side. (select its color/method (gravity method) 50% or more).  
It can not be equipped with air filter (accessory) when connecting duct to suction side.

- Liquid pipe connection  $\phi$  6.4 (Flare connection)
- Gas pipe connection  $\phi$  12.7 (Flare connection)
- Socket for drain VP20 (O.D.  $\phi$  26 / I.D.  $\phi$  20)
- Drain hose (accessory) I.D.  $\phi$  25 (Outlet)
- Control box
- Infrared receiver unit connection
- Power supply connection
- Suspension bracket
- Air filter (accessory)