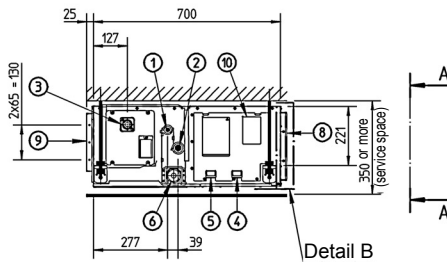
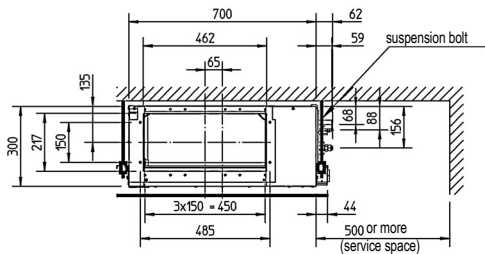


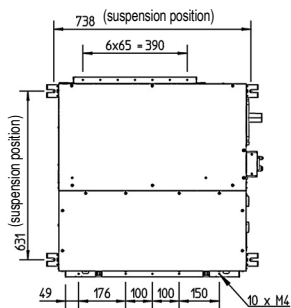
View A-A



Detail B



Detail B



NOTES

- 1 Refer to 'outlook drawing for installing optional accessories' when installing optional accessories.
- 2 The required ceiling depth varies according to the configuration of the specific system.
- 3 For maintenance of the air filter, it is necessary to provide a service access panel.
Refer to the 'filter installation method' drawing

Item	Name	Description
1	Liquid pipe connection	Ø6.35 flare connection
2	Gas pipe connection	Ø9.52 flare connection
3	Drain pipe connection	VP25 (OD Ø32, ID Ø25)
4	Remote control wiring connection	-
5	Power supply connection	-
6	Drain hole	VP25 (OD Ø32, ID Ø25)
7	Air filter	-
8	Air suction side	-
9	Air discharge side	-
10	Nameplate	-