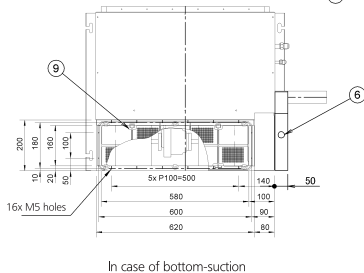
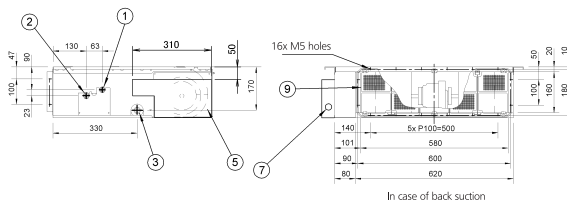
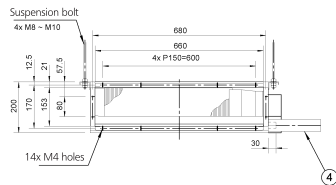
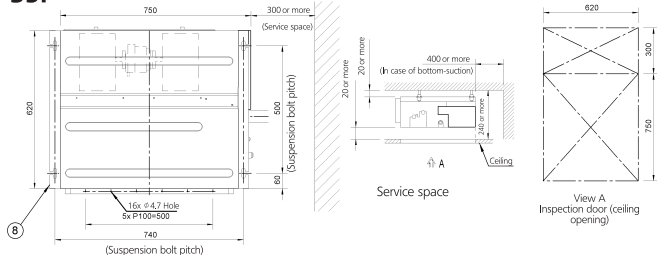


FDXS25-35F



1	Liquid pipe connection	ϕ 6.4 Flare connection
2	Gas pipe connection	ϕ 9.5 Flare connection
3	Socket for drain	VP 20 (CO ϕ 26, ID ϕ 20)
4	Drain hose (accessory)	ID ϕ 25 (Outlet)
5	Control box	
6	Transmission wiring	
7	Power supply connection	
8	Suspension bracket	
9	Air filter (accessory)	

Note:

- In case of back-suction, mount chamber cover to bottom side of the unit.
In case of bottom-suction, mount chamber cover to back side of the unit.
- Location of unit's name plate: control box cover.
- Mount the air filter at the suction side. (Use an air filter whose dust collecting efficiency is at least 50% in a gravimetric technique.) It can not be equipped with air filter (accessory) when connecting duct to suction side.