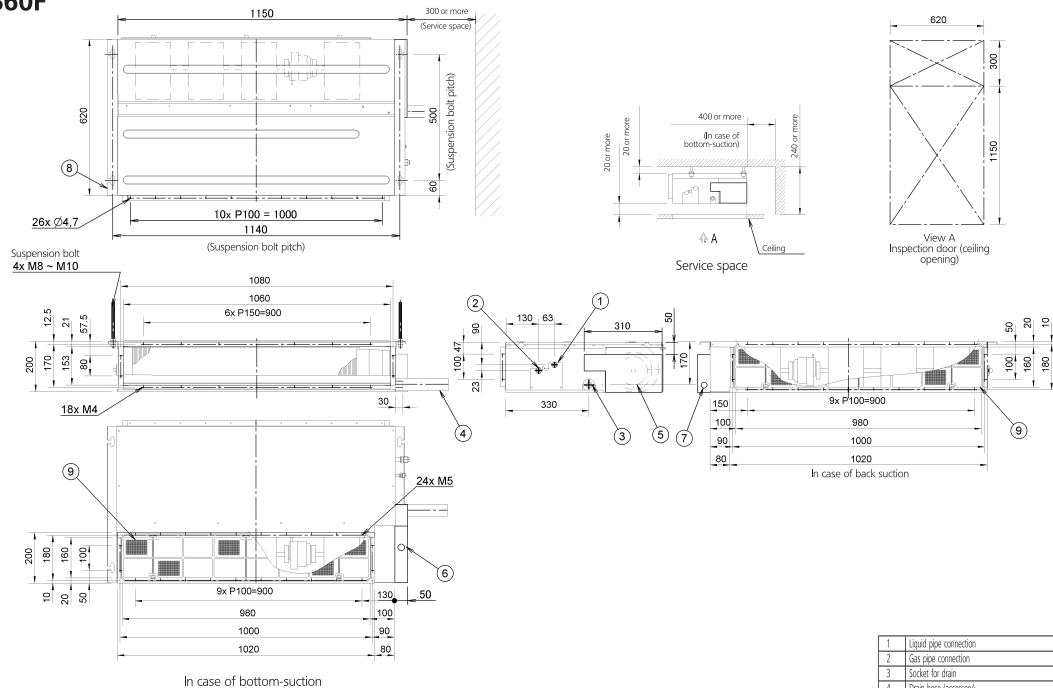


# FDXS60F



1	Liquid pipe connection	$\varnothing 6.4$ Fibre connection
2	Gas pipe connection	$\varnothing 12.7$ Fibre connection
3	Socket for drain	VP 20 (OD $\varnothing 26$ , ID $\varnothing 20$ )
4	Drain hose (accessory)	ID $\varnothing 25$ (Outer)
5	control box	
6	Transmission wiring	
7	Power supply connection	
8	Suspension bracket	
9	Air filter (accessory)	

## Note:

- In case of back-suction, mount chamber cover to bottom side of the unit.
- In case of bottom-suction, mount chamber cover to back side of the unit.
- Location of unit's name plate: control box cover.
- Mount the air filter at the suction side. (Use an air filter whose dust collecting efficiency is at least 50% in a gravimetric technique.) It can not be equipped with air filter (accessory) when connecting duct to suction side.