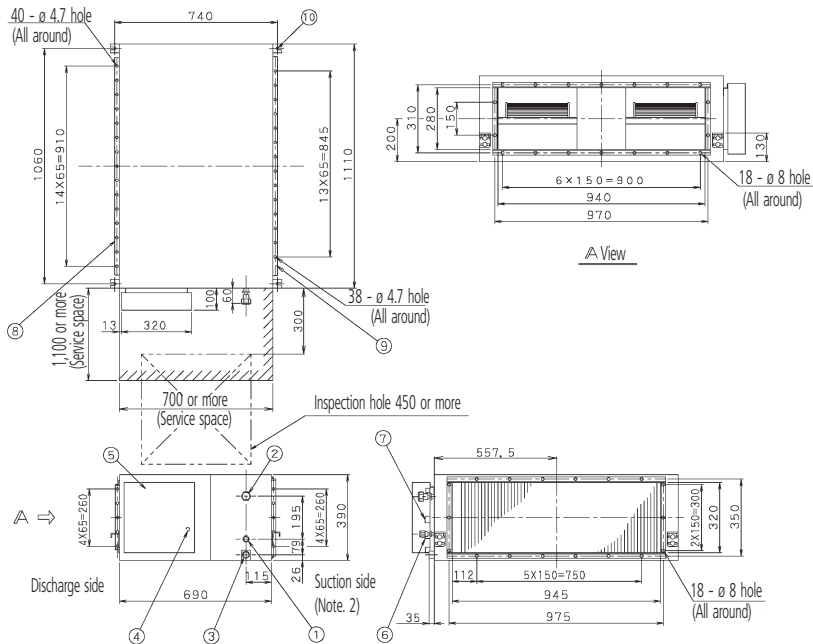


# FXMQ100,125MA



| Nr | Part name                   | Description                           |
|----|-----------------------------|---------------------------------------|
| 1  | Liquid pipe connection      | $\phi$ 9.5 flare connection           |
| 2  | Gas pipe connection         | $\phi$ 15.9 flare connection          |
| 3  | Drain pipe connection       | VP25 (O.D. $\phi$ 32, I.D. $\phi$ 25) |
| 4  | Ground terminal             | M4                                    |
| 5  | Switch box                  |                                       |
| 6  | Interunit wiring connection |                                       |
| 7  | Power supply connection     |                                       |
| 8  | Air discharge flange        |                                       |
| 9  | Air suction flange          |                                       |
| 10 | Hook                        | For M8~M10                            |

## NOTES

- 1 Location of unit's name plate: switch box surface.
- 2 Mount the air filter at the suction side. (Select its colorimethod (gravity method) 50% or more).
- 3 Be sure to install a drain trap, as the drain outlet of the air-conditioner becomes negative pressure.
- 4 Be sure to install a drain trap for each unit separately, when you install a consolidated drain piping.