

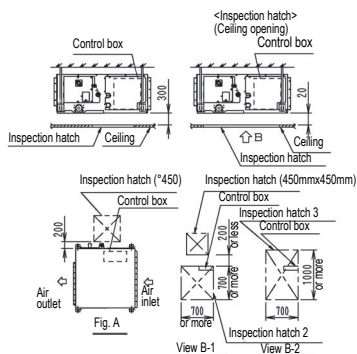
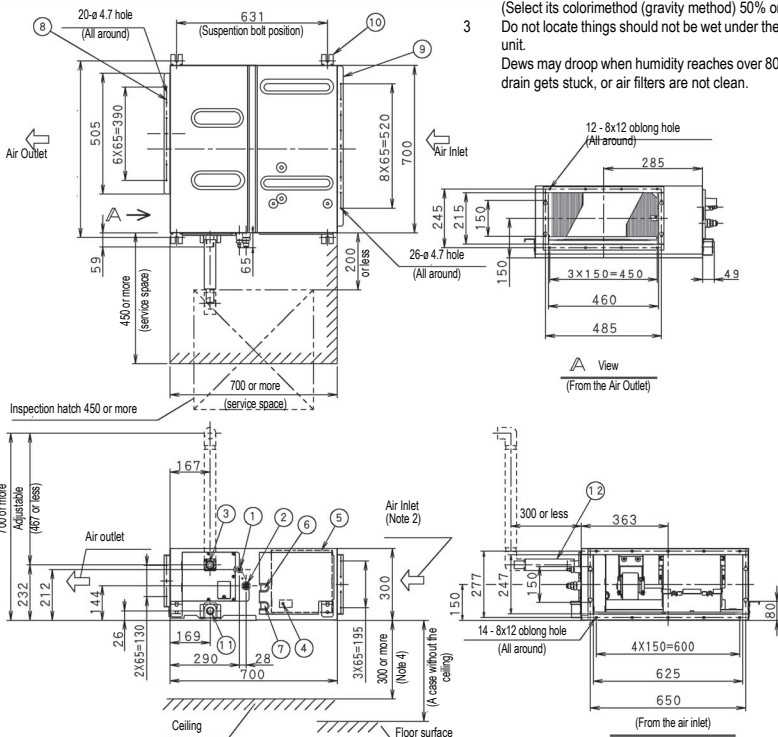
NOTES

- 1 Location of MANUFACTURE'S LABEL: Control box
- 2 Mount the air filter at the suction side.
(Select its color/method (gravity method) 50% or more)
- 3 Do not locate things should not be wet under the indoor unit.
Dews may drop when humidity reaches over 80%, or a drain gets stuck, or air filters are not clean.
- 4 Space for Service Works

Space for Service Works

According to any one of below 1) - 3), secure a space for service works, such as, checking and maintenance of control box and drain pumps, etc.

- 1) One inspection hatch (450x450) on the control box side and a space of 300mm or more under the unit. (Fig.A)
- 2) One inspection hatch (450x450) on the control box side and 2 (two) inspection hatches under the unit (Arrow view B-1)
- 3) 3 (three) inspection hatches under the unit and the control box. (Arrow view B-2)



12	Drain hose (accessory)	O.D. ø 32 (outlet)
11	Socket (for maintenance)	VP25 (O.D. ø 32 /I.D. ø 25)
10	Hook	For M10
9	Air suction flange	
8	Air discharge flange	
7	Power supply connection	
6	Interunit wiring connection	
5	Control box (inside)	
4	Ground terminal (in control box)	M4
3	Drain pipe connection	VP25 (O.D. ø 32 /I.D. ø 25)
2	Gas pipe connection	ø 12.7 flare connection
1	Liquid pipe connection	ø 6.4 flare connection
ITEM	PART NAME	REMARK