

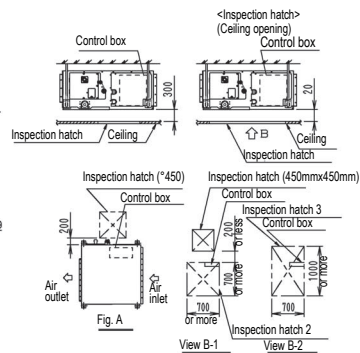
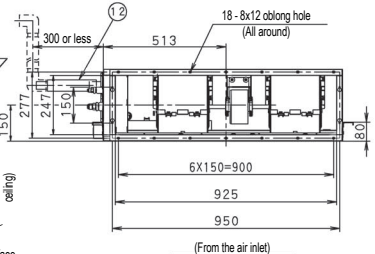
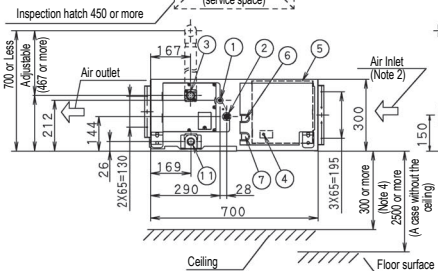
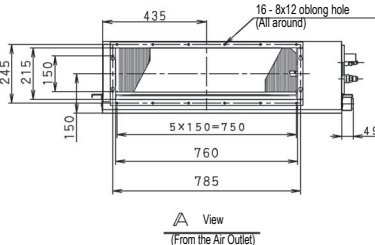
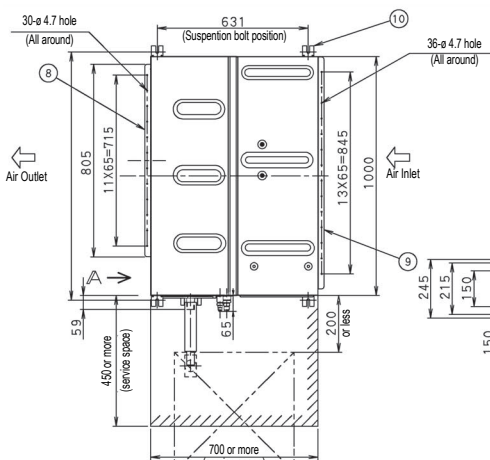
NOTES

- 1 Location of MANUFACTURE'S LABEL: Control box 4 surface
- 2 Mount the air filter at the suction side.
(Select its color/method (gravity method) 50% or more)
- 3 Do not locate things should not be wet under the indoor unit.
Dews may drop when humidity reaches over 80%, or a drain gets stuck, or air filters are not clean.

Space for Service Works

According to any one of below 1) - 3), secure a space for service works, such as, checking and maintenance of control box and drain pumps, etc.

- 1) One inspection hatch (450x450) on the control box side and a space of 300mm or more under the unit. (Fig.A)
- 2) One inspection hatch (450x450) on the control box side and 2 (two) inspection hatches under the unit (Arrow view B-1)
- 3) 3 (three) inspection hatches under the unit and the control box. (Arrow view B-2)



| | | |
|------|----------------------------------|-----------------------------|
| 12 | Drain hose (accessory) | O.D. ø 32 (outlet) |
| 11 | Socket (for maintenance) | VP25 (O.D. ø 32 /I.D. ø 25) |
| 10 | Hook | For M10 |
| 9 | Air suction flange | |
| 8 | Air discharge flange | |
| 7 | Power supply connection | |
| 6 | Interunit wiring connection | |
| 5 | Control box (inside) | |
| 4 | Ground terminal (in control box) | M4 |
| 3 | Drain pipe connection | VP25 (O.D. ø 32 /I.D. ø 25) |
| 2 | Gas pipe connection | ø 15.9 flare connection |
| 1 | Liquid pipe connection | ø 9.5 flare connection |
| ITEM | PART NAME | REMARK |