

# Haier

## **MRV Model MP2A,MP3A Device Installation Manual**



**Special No.**

<b>0010573352</b> <b>B</b>
-------------------------------

## 1. Installation Precautions

In order to guarantee proper installation, please read this Installation Precautions carefully.

The following precautions are related to safety, please observe.

The following precautions are divided into "⚠ Warning" and "⚠ Precautions". The items that improper installation is most possible to cause death or serious injury, etc. serious accidents are listed in "Warning" volumn. However, even the items listed in "Precautions" volume may also cause serious accidents.

⊘ : All the contents with the mark of "Prohibition" are the actions must be prohibited to perform.

ⓘ : All the contents with the mark of "Compulsive" are the actions must be observed.

After finishing the installation work, do test run to verify everything is normal.

### ⚠ Warning

- Please commission the professional installation to perform installation by the local or the nearest after-sales telephone center of Haier Group.
- Do not install by yourself. For the users who do not ask the commissioned maintenance department appointed by the telephone center of Haier Group to perform installation and not registered in the center, Haier Commercial Air Conditioner will not be responsible for the maintenance of the unit. For details, please refer to the Warranty Card attached with the unit.
- Please do install the unit according to this installation manual, improper installation may cause water leakage, electric shock or fire accident.
- Please use the accessories of the unit and the specified parts. The device shall be put to the place where the children cannot reach, it shall be at least 1.8m away from the ground.
- The electric wiring must be complied with the rules of National electric wiring or the practical operation regulation.

### ⚠ Precautions

- The unit must be grounded. Do not connect the grounding wire with gas pipe, water pipe, lightning rod and the groundning wire of telephone line.
- The creepage protector must be installed.
- If the flammable gas leakage occurs, do not perform installation of the unit.
- Please arrange the drainage pipe according to this installation manual.

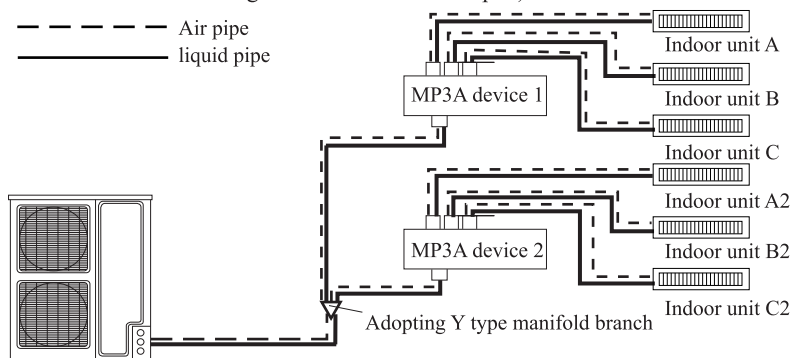
For the installation of indoor and outdoor unit, please refer to the attached installation manual.

## 2.The figure of system setting

Type of MP2A device: for two rooms (each MP2A device can connected with 2 sets of indoor unit). Please select the number of MP2A device according to actual installation modes.

Type of MP3A device: for three rooms (each MP3A device can connected with 3 sets of indoor unit). Please select the number of MP3A device according to actual installation modes.

The installation method is as figure shown (this manual only takes MP3A device as an example. The installation method of MP2A is the same as MP3A except for the number of the device connected. Take connecting 6 indoor units as example.):



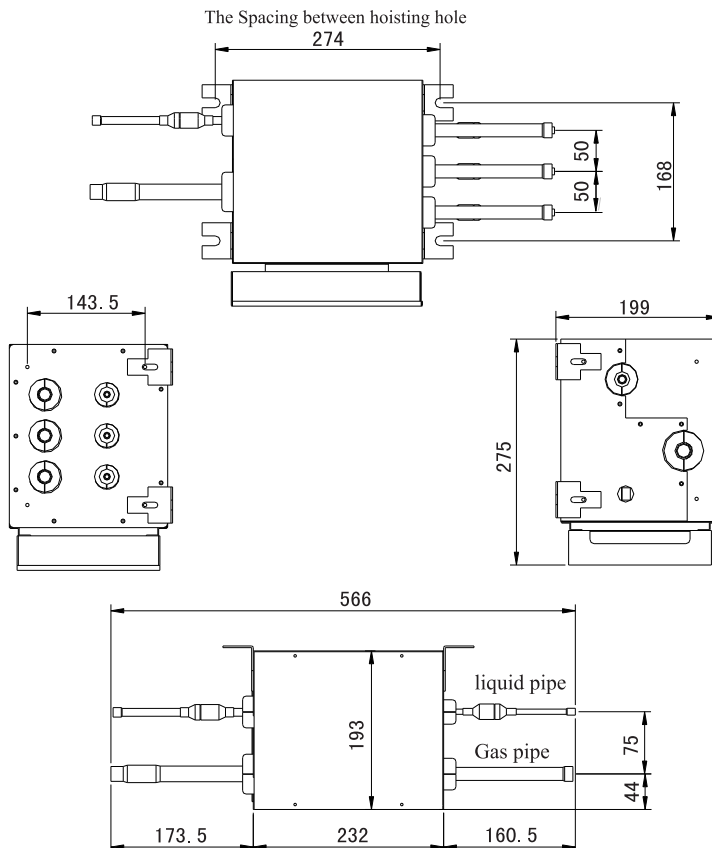
### 3.Installation Parts:

- 1).MP3A accessories: Installation Manual, 3 variable diameter branch pipes;  
MP2A accessories: Installation Manual, 2 variable diameter branch pipes;
- 2).Locally bought parts: connecting wire, hoisting bolt: 4 M10 or M8, 8 nuts and 8 washers.

### 4.Precautions in selecting the installation place

- 1). Place which strength can sufficiently bear the weight of the device with no vibration.
  - 2). Place convenient for the installation of refrigerant pipe between indoor and outdoor unit, and the length of the connecting pipe is in the permitted limit.
  - 3). Place where there is no heat source and vapor source nearby.
  - 4). Place which can guarantee sufficient space for installation and maintenance.
  - 5). Do not install the device in the place where is often in high temperature and humidity state.
  - 6). Place with good ventilation.
  - 7). Do not install the device near the bedroom. The refrigerant sometimes gives sound of flowing.
- For other safety precautions, please refer to the warning and precaution items on the first page.

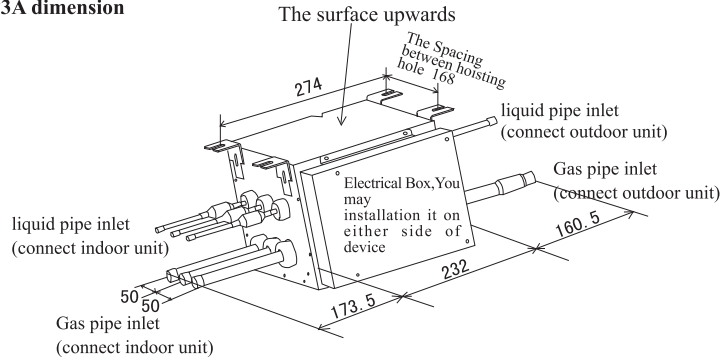
### 5.Installation dimension fig



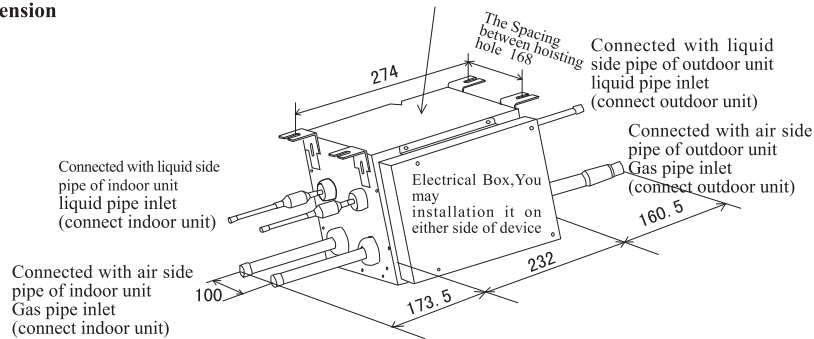
6.Installation method

- 1).Device shall be horizontally hung near the wall, and the maintenance cover plate must be installed downwards, and it must be guaranteed to open a manhole of at least size of 600x600mm.
- 2).For the heat insulation treatment of the pipes, the device had been performed inside foaming treatment, so it is not necessary to perform drainage treatment.
- 3).The pipes of indoor unit side are introduced out from the horizontal direction of device, and they can extend to any direction.
- 4).When installing, the angle of inclination must be kept within  $\pm 5^{\circ}$ .

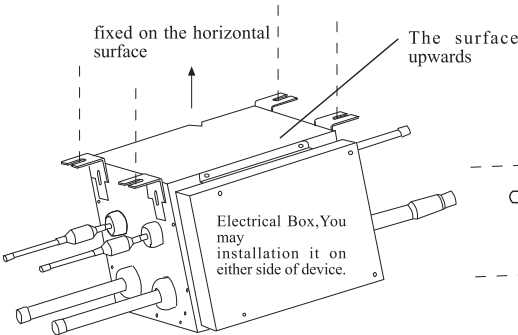
MP3A dimension



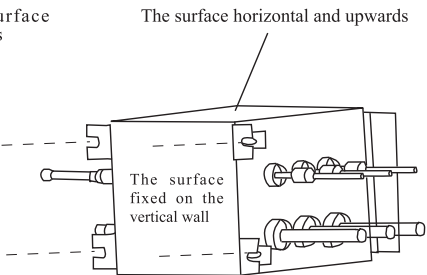
MP2A dimension



fixed on the horizontal surface

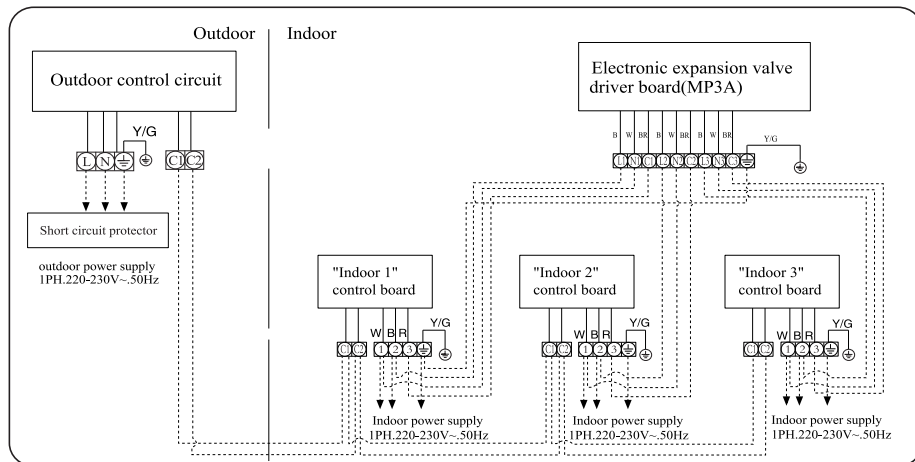


fixed on the vertical wall



## 7.Connection of Electric wires:

- 1).The electric wire and refrigerant pipe shall be connected to the corresponding interfaces (there are symbols: 1, 2, 3 on the MP3A device and terminal block).
- 2).The wiring diagram of device is attached on the inner side of the casing (Please connect the electric wires according to the wiring diagram, otherwise, it may cause the damage of control panel of indoor unit and MP3A)
- 3).For the wiring diagram between indoor and outdoor unit and MP3A, please refer to the wiring diagram of the next page, after finishing wiring, be sure to use wire clamp to fix the sheath of the wire firmly.
- 4).Operatoin procedure:  
Loosen screw, then remove the cover plate; connect electric wires according to wiring diagram, be sure the wire bundle shall have excessive length, so that it can be pulled out; after finishing connection and checked there is no problems, record the rooms connected with indoor unit and the number of indoor unit; use wire clamp to fix the wire properly, and reinstall the cover plate properly, then tighten screws to fix the cover plate.



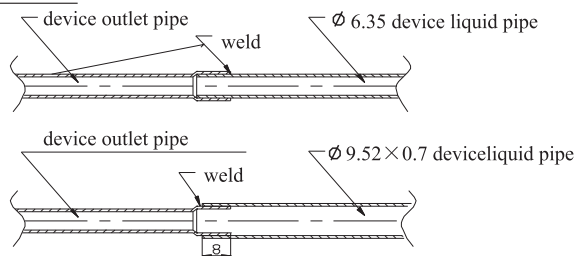
### NOTE:

- 1.The power supply and communication wiring of indoor electronic expansion valve must be connected with their corresponding indoor unit.And their phase sequence must correspond with the remarks strictly respectively, or will cause control board of indoor unit and electronic expansion valve box abnormal or damaged.
- 2.Because the power supply of device control board is joined from "indoor 1","indoor 1" must be always electrified in running mode, or will cause performance abnormal.
- 3.Device wiring and indoor units wiring:  $H05RNF\ 4 \times (1.0-1.5)mm^2$  , $H05RNF\ 3 \times (1.0-1.5)mm^2$  .

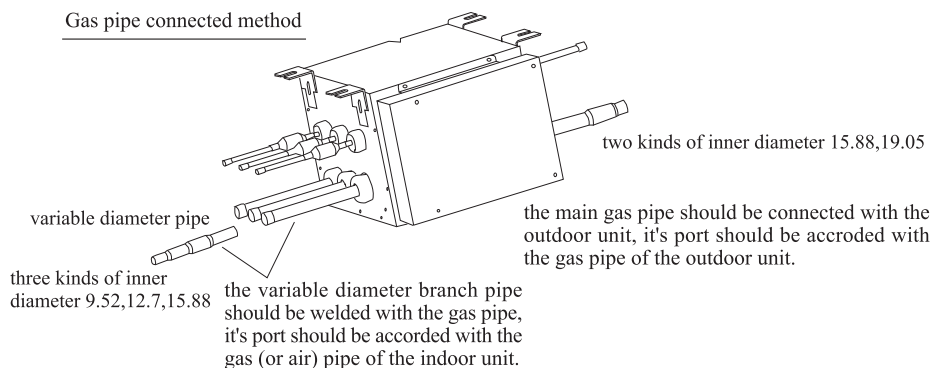
## 8.Connection of Pipes:

- 1).When connecting indoor unit, the refrigerant pipe and the connecting wire shall be in line with the symbols marked on this device (1, 2 and 3 etc.).  
Note: When using two or more than two devices (when connecting over 4 indoor units, it needs two or more than two devices), the room number connected with indoor unit must be marked clearly on the label of device for the convenient maintenance of the air conditioner.
- 2).When needing change the introducing out direction of the connecting pipe, please use pipe joint to connect. Using pipe joint can connect the refrigerant pipe of different diameters.  
Before installing electronic expansion valve throttling device, please first seal the pipe joint properly.

### liquid pipe connected method



### Gas pipe connected method



## 9. Open valve control of MP3A(MP2A):

- A. After finishing the connecting of the power cord of MP3A (MP2A), connect with power supply, make the jumpers CN10, CN11, CN12 on the control panel of MP3A (MP2A) short circuit in turn. Valve 1, valve 2 and valve 3 can be opened respectively (please do not make CN10, CN11, CN12 short circuit simultaneously).
- B. After all the electric wire connection of outdoor unit are finished, start the cooling or heating function of indoor unit, after the compressor starts to run, the electronic expansion valve corresponding to the started indoor unit will open.

Note: When the electronic expansion valve is open, please cut off power as soon as possible, and the electronic expansion valve is kept in open state. After connected with power again, all the electronic expansion valve will reset.

## 10. Test Run:

After finishing installation, perform test run according to the relevant contents in manual of the indoor and outdoor unit.



**HAIER GROUP**

Qingdao Haier Air Conditioner Electric Co., Ltd.

Address: Haier Garden, Qianwangang Road, Economic Development Zone,  
Qingdao, Shandong 266500, P.R.China

Web Site: <http://www.haier.com>